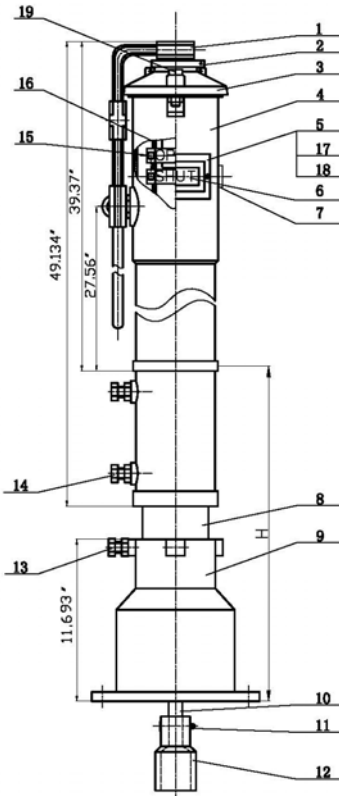




### MATERIAL SPECIFICATION

PART NO.	Description	Material Specification	Standard
1	Handle	Ductile Iron	ASTM A536
2	Driving rod	Stainless steel 304	ASTM A276
3	Indicator cover	Cast Iron	ASTM A126
4	Housing	Cast Iron	ASTM A126
5	Keyhole plate	ASTM A36 A283 Gr.C	ASTM A36
6	Indicator plate	ASTM S12A A413.0	ASTM A36
7	Screwed plug	Carbon Steel AISI 1035	ASTM A29
8	Extension rod	ASTM A36 A283 Gr.C	ASTM A36
9	Flange	Cast Iron	ASTM A126
10	Connecting rod	Carbon Steel AISI 1045	ASTM A29
11	Cotter pin	Carbon Steel AISI 1035	ASTM A29
12	Joint	Cast Iron	ASTM A126
13	Bolt	Carbon Steel AISI 1035	ASTM A29
14	Bolt	Carbon Steel AISI 1035	ASTM A29
15	Bolt	Carbon Steel AISI 1035	ASTM A29
16	Driving nut	Stainless steel 304	ASTM A276
17	Keyhole plate gasket	EPDM	ASTM D2000
18	Indicator flap	Organic glass	
19	Bolt	Carbon Steel AISI 1035	ASTM A29

Note: For special material request other than standard specification, please indicate clearly on the inquiry or order list



·Field Adjustment:

- 1.Remove the top section from the top of the indicator post assembly;
- 2.Cut the required stem length and adjust the standpipe to match up to the ground line;
- 3.Set the "OPEN" and "SHUT" targets for the appropriate valve size;
- 4.Reattach the top section to the top of the indicator post assembly.

·Statement: Vertical indicator post provides a means to operate a buried or otherwise inaccessible valve and able to indicate the open or shut position of the valve.

·Coating: Fusion bonded epoxy coating in accordance with ANSI/AWWA C550.

DRAWN BY: Cindy Zhang	DRAWING #: JKDVP	Vertical Indicator Post	
		Series NO.:JKDVP	
CHECKED BY:		 <b>KINGER</b> KINGER INDUSTRY INC.	REV.00.
APPROVED BY: Meng Xiang	ISSUE DATE 170203-1		