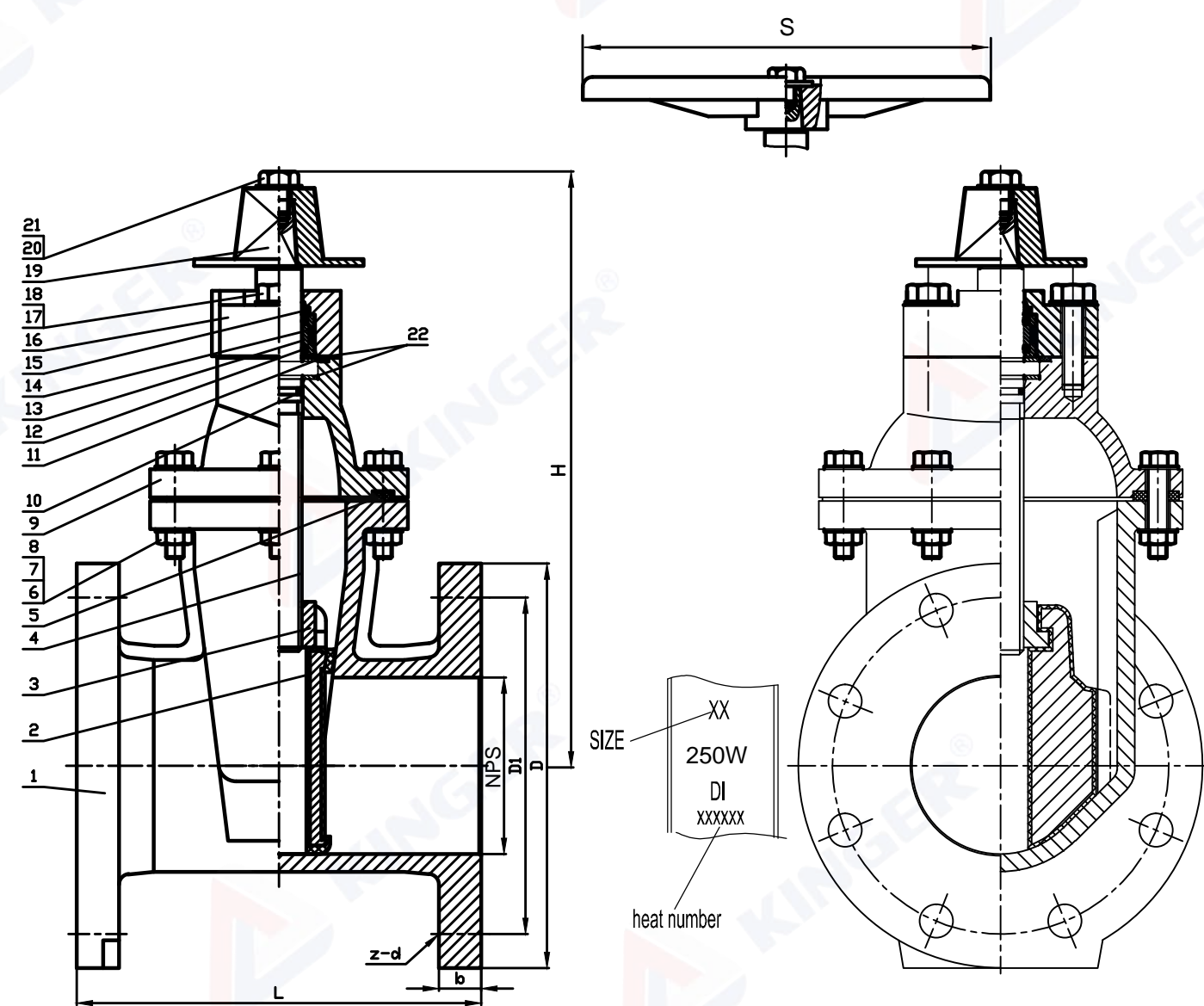


APPLICABLE STANDARD	
Design&Manufacture	AWWA C509
End Connection	ASME B16.1 CL125/ ASME B16.42 CL150
Face-to-Face and End-to-End Dimensions	ASME B16.10
Working Temperature	32°F - 176°F
Medium	Water

TESTING DETAILS	
DESCRIPTION	TEST PRESSURE
SHELL TEST	500PSI
SEAT TEST	250PSI



PART NO.	Description	Material Specification
1	Body	Ductile Iron ASTM A536
2	Wedge	DI ASTM A536+EPDM ASTM D2000
3	Stem Nut	Brass ASTM B16
4	Stem	Stainless Steel 316
5	Gasket	EPDM ASTM D2000
6	Bonnet Bolt	Stainless Steel 316
7	Nut	Stainless Steel 316
8	Washer	Stainless Steel 316
9	Bonnet	Ductile Iron ASTM A536
10	O-Ring	EPDM ASTM D2000
11	O-Ring	EPDM ASTM D2000
12	O-Ring	EPDM ASTM D2000
13	Seal Ring	Brass ASTM B16
14	O-Ring	EPDM ASTM D2000
15	Dust Ring	EPDM ASTM D2000
16	Gland	Ductile Iron ASTM A536
17	Washer	Stainless Steel 316
18	Gland Bolt	Stainless Steel 316
19	Wrench Nut	Ductile Iron ASTM A536
20	Wheel Bolt	Stainless Steel 316
21	Washer	Stainless Steel 316
22	Minipad	PTFE

Item No.	Dimensions(Inch)										TURN TO OPEN
	NPS	D	D1	b	z	d	L	S	H		
									Handwheel	Wrench Nut	
JHZ45XQ02	2"	6.00	4.75	0.62	4	0.750	7.00	7.9	9.45	10.39	7
JHZ45XQ025	2.5"	7.00	5.50	0.69	4	0.750	7.50	8.7	10.47	11.42	9
JHZ45XQ03	3"	7.50	6.00	0.75	4	0.750	8.00	9.7	11.69	12.64	10
JHZ45XQ04	4"	9.00	7.50	0.94	8	0.750	9.00	10.0	12.99	13.94	13
JHZ45XQ05	5"	10.00	8.50	0.94	8	0.875	10.00	12.4	14.80	15.75	16
JHZ45XQ06	6"	11.00	9.50	1.00	8	0.875	10.50	12.4	16.46	17.40	19
JHZ45XQ08	8"	13.50	11.75	1.12	8	0.875	11.50	14.0	19.69	20.63	26
JHZ45XQ10	10"	16.00	14.25	1.19	12	1.000	13.00	17.7	23.03	23.98	32
JHZ45XQ12	12"	19.00	17.00	1.25	12	1.000	14.00	17.7	26.14	27.09	38
JHZ45XQ14	14"	21.00	18.75	1.38	12	1.125	15.00	17.7	30.00	30.94	59
JHZ45XQ16	16"	23.50	21.25	1.44	16	1.125	16.00	17.7	32.95	33.90	51
JHZ45XQ18	18"	25.00	22.75	1.56	16	1.250	17.00	19.5	36.46	37.40	57
JHZ45XQ20	20"	27.50	25.00	1.69	20	1.250	18.00	19.5	39.49	40.43	64
JHZ45XQ24	24"	32.00	29.50	1.88	20	1.375	20.00	19.5	45.67	45.59	76

DESCRIPTION AWWA C509 Flanged Resilient NRS Gate Valve	Proj.	JHZ45XQ-001	
	DWG#	JH-001	
	WN	APPR.	DATE
	CINDY	KUHN HU	3-7-2025