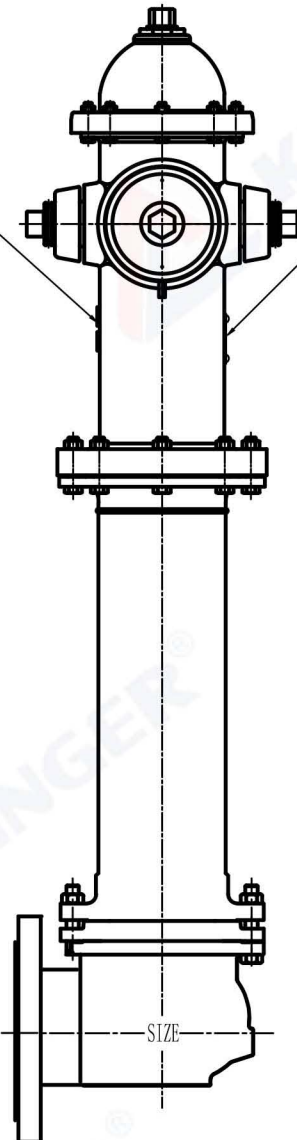


Typecasting:
ANSI/AWWA
C502
250PSI
Heat No.

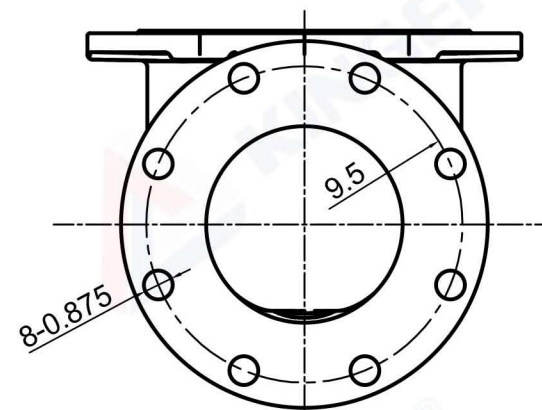
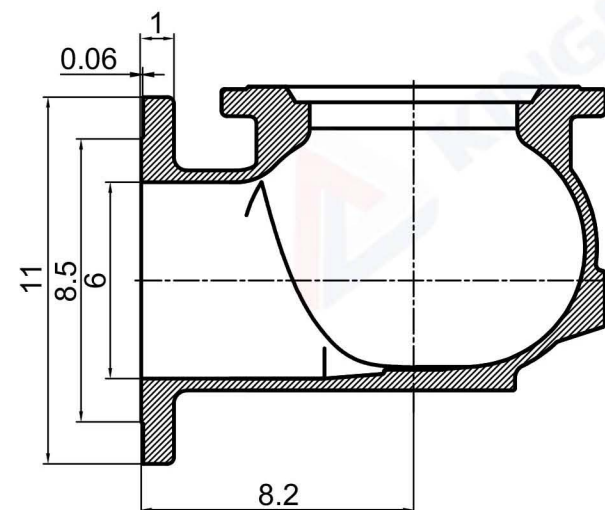
Nameplate:



Technical requirements:

- Design standard:ANSI/AWWA C502.
- Normal pressure : 250PSI.
- 1 Connecting thread of fire truck is 4.5-4NH,2 thread connector of soft pipe is 2.5-7.5NH.
- Flange connector:ASME B16.5 CL150/DIN 2501 PN16.

PART NO.	Description	Material Specification
1	Flange connector	Ductile Iron ASTM A536,65-45-12
2	Locking nut	Ductile Iron ASTM A536,65-45-12
3	Connecting rod	ASTM A29\29M 1045
4	Locking nut gasket	EPDM ASTM D2000
5	Tray	Ductile Iron ASTM A536,65-45-12
6	Sealed rubber sheet	EPDM ASTM D2000
7	Drain hole Spring	Stainless Steel SS316
8	Connecting cylinder	Ductile Iron ASTM A536,65-45-12
9	Perforated cylindrical pin	ASTM A29\29M 1045
10	Connecting rod sleeve	ASTM A29\29M 1045
11	Clamp for connection tube	Ductile Iron ASTM A536,65-45-12
12	Main body on ground	Ductile Iron ASTM A536,65-45-12
13	65 Connector	ASTM B148 C95400
14	65 Cover gasket	EPDM ASTM D2000
15	65 Cover	Ductile Iron ASTM A536,65-45-12
16	Upper end cover	Ductile Iron ASTM A536,65-45-12
17	Thread plug	ASTM B148 C95400
18	Screw stem nut	ASTM B148 C95400
19	Screw nut gasket	ASTM B148 C95400
20	Screw nut seat	ASTM B148 C95400
21	Bolt, Nut	ASTM A29\29M 1035
22	100 Cover	Ductile Iron ASTM A536,65-45-12
23	Cylindrical pin	ASTM A29\29M 1045
24	Cover chain	ASTM A283-B Gr.B
25	Bolt, Nut	ASTM A29\29M 1035
26	Screw stem	ASTM A29\29M 1045
27	Cushion rubber	EPDM ASTM D2000
28	Drain hole cover	C95400+EPDM
29	Seat	ASTM B148 C95400
30	Bolt, Nut	Stainless Steel SS304
31	Seat fixing plate	Ductile Iron ASTM A536,65-45-12
32	Bolt, Nut	ASTM A29\29M 1035
33	Annular tubes	ASTM A29\29M 1045
34	Platen	Ductile Iron ASTM A536,65-45-12
35	Locking nut seat	Ductile Iron ASTM A536,65-45-12
36	Check turn gasket	ASTM A283-B Gr.B
37	100 Connector	ASTM B148 C95400
38	100 Cover gasket	EPDM ASTM D2000
39	Screw stem bushing	Stainless Steel SS304
40	Bolt	Stainless Steel SS304



DESCRIPTION	Proj.	K19FL	
Dry Barrel Fire Hydrant	DWG#	KFJ-001	
	REV.	0	
	WN	APPR.	DATE
	CINDY	KUHN HU	3-7-2025

CUSTOMER			
PAGE NO	1 of 1	For special material requests beyond the standard specifications, please clearly note them on your inquiry or order form.	

Item.No	L							
K19FL	3'6"	4'	4'6"	5'	5'6"	6'	6'6"	7'