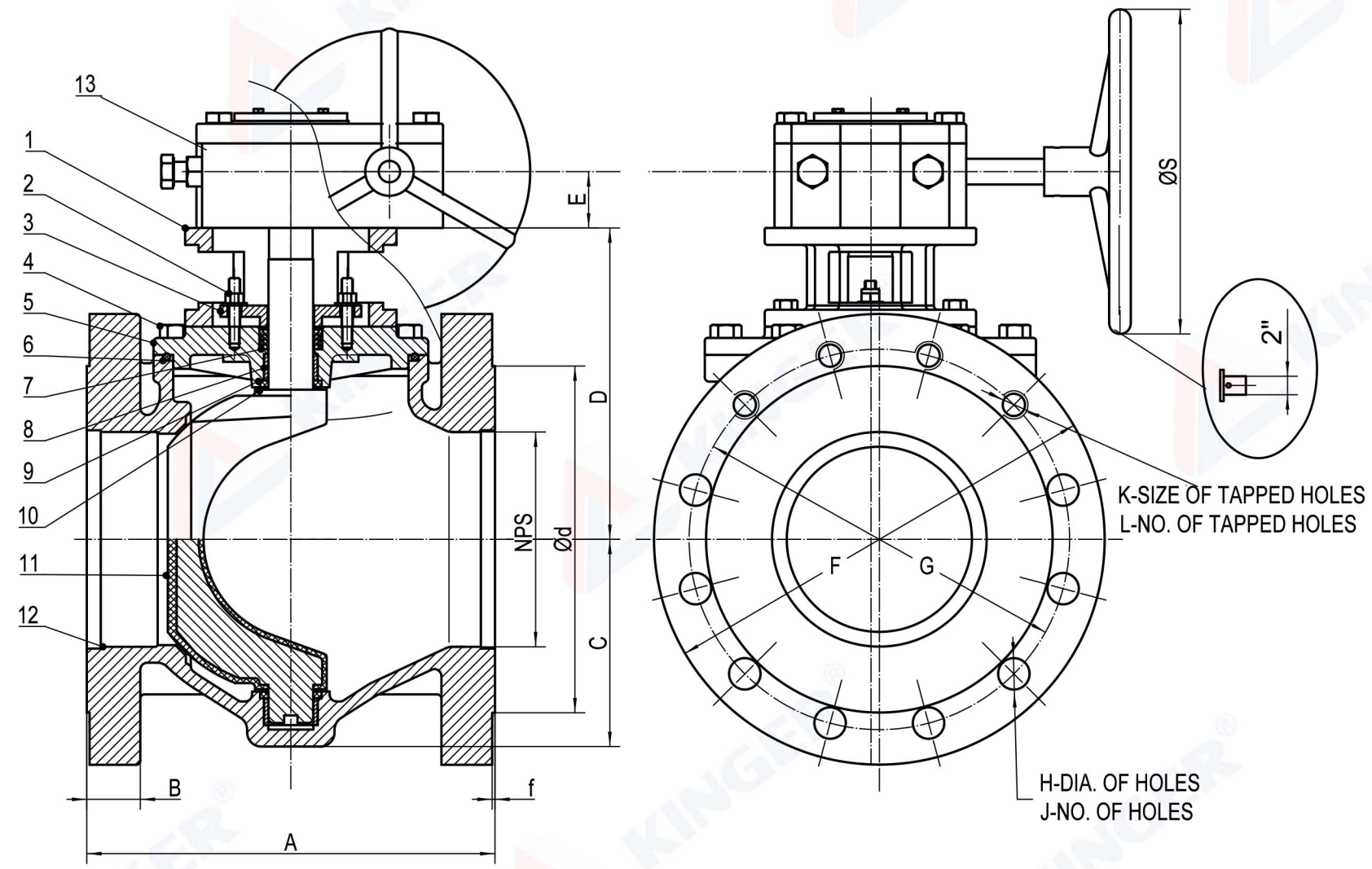
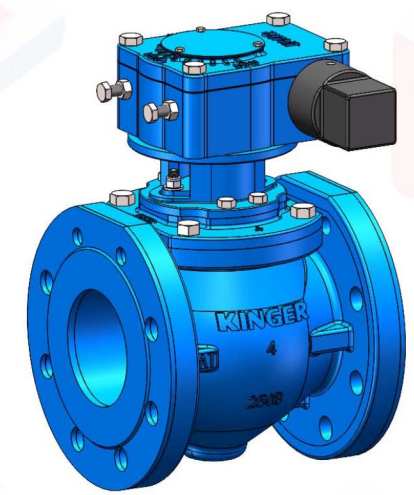


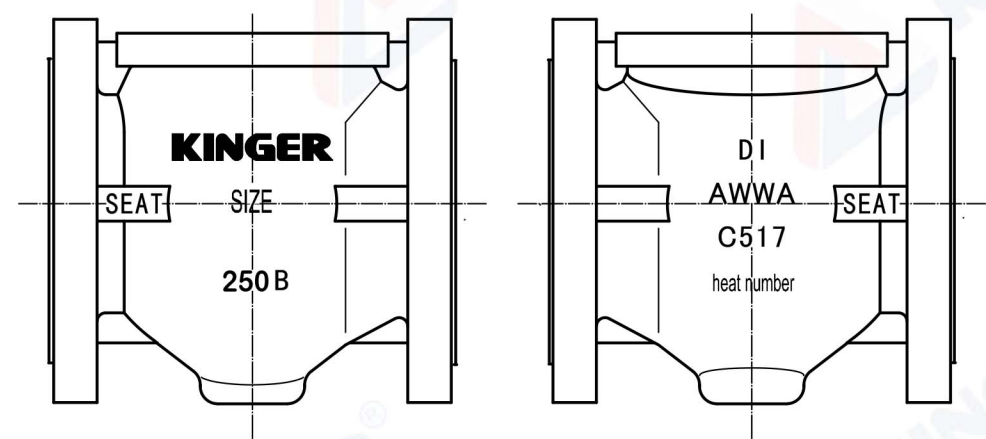
Item No.	NPS	Dimensions(Inch)														ØS
		A	C	D	E	F	G	B	H	J	K	L	d	f		
KPL250-GH03	3"	8.67	3.54	6.08	1.58	8.25	6.62	1.12	0.875	2	3/4-10UNC	6	5.69	0.06	8	
KPL250-GH04	4"	9.55	4.53	7.00	1.58	10.00	7.88	1.25	0.875	2	3/4-10UNC	6	6.94	0.06	8	
KPL250-GH06	6"	11.30	5.79	8.74	1.58	12.50	10.62	1.44	0.875	8	3/4-10UNC	4	9.69	0.06	12	
KPL250-GH08	8"	16.50	7.68	10.51	1.90	15.00	13.00	1.62	1.000	8	7/8-9UNC	4	11.94	0.06	20	
KPL250-GH10	10"	18.00	9.06	12.52	1.90	17.50	15.25	1.88	1.125	12	1-8UNC	4	14.06	0.06	24	
KPL250-GH12	12"	19.75	10.32	13.96	1.90	20.50	17.75	2.00	1.250	12	1.125-7UNC	4	16.44	0.06	30	

Specification			
Cold Working Pressure (CWP)	250	PSI	
Test Pressure	Shell Test(Hyd.)		375
	Seal Test(Hyd.)		250
	Reverse Pressure Test(Hyd.)	100	
Working Temperature	32°F -176°F		
Medium	Water		



- NOTES:
 1. ALL DIMENSIONS ARE IN INCHES ;
 2. DESIGN STANDARD PER AWWA C517 ;
 3. FLANGE STANDARD PER ASME B16.1 CLASS 250 ;

Part No	Description	Material Specification
1	Gear Adapter	Ductile Iron ASTM A536
2	Gland Fastener	Stainless Steel 316
3	Gland	Ductile Iron ASTM A536
4	Bonnet Bolt	Stainless Steel 316
5	Bonnet	Ductile Iron ASTM A536
6	O-Ring	NBR ASTM D2000
7	"V" Packing	NBR ASTM D2000
8	Sleeve Bearing	Stainless Steel 316
9	Grit Seal	NBR ASTM D2000
10	Thrust Washer	PTFE
11	Plug	DI ASTM A536 65-45-12+NBR ASTM D2000
12	Body	Ductile Iron ASTM A536+95%Ni
13	Worm Gear	Assembly



DESCRIPTION	Proj.	KPL250-GH	
AWWA C517 Flanged Eccentric Plug Valve	DWG#	KPL-006	REV. 1
	DWN	APPR.	DATE
	CINDY	KUHN	9/23/2021