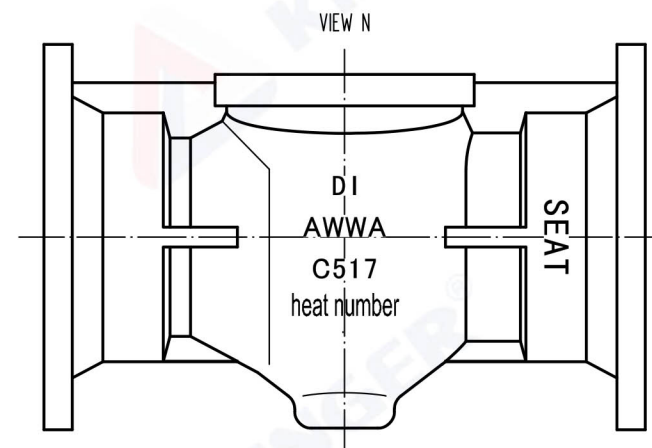
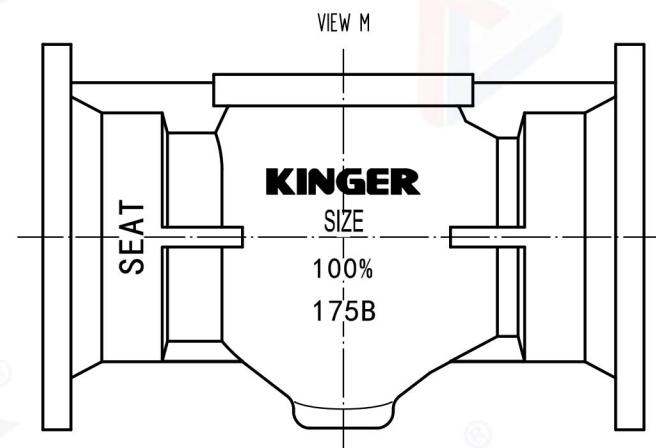
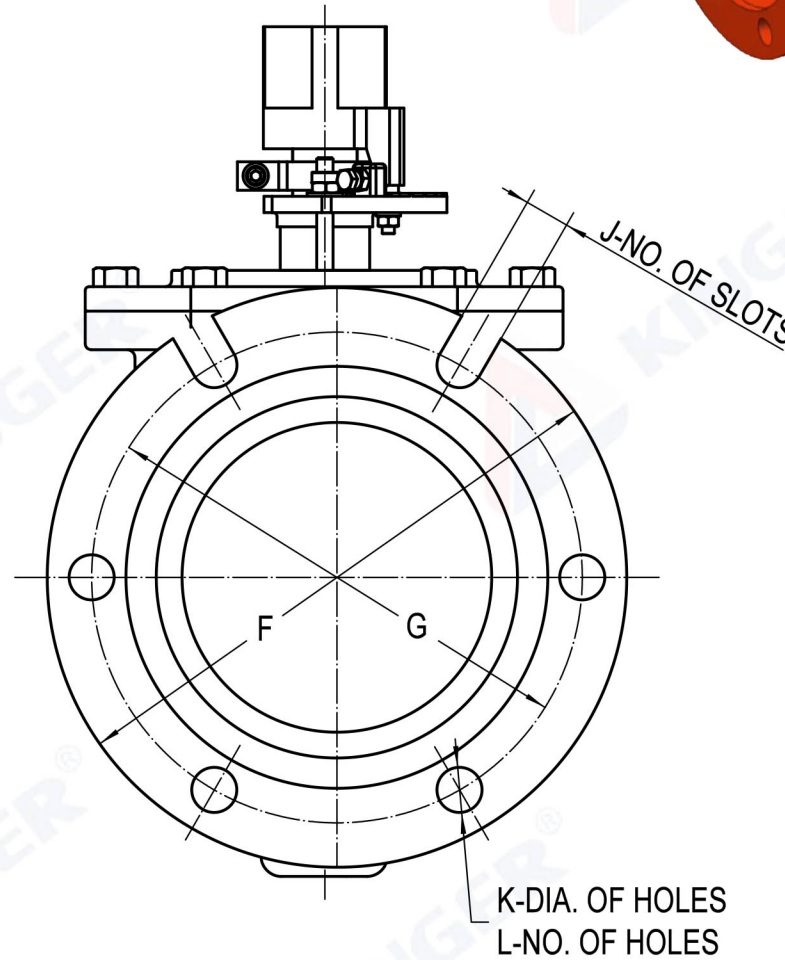
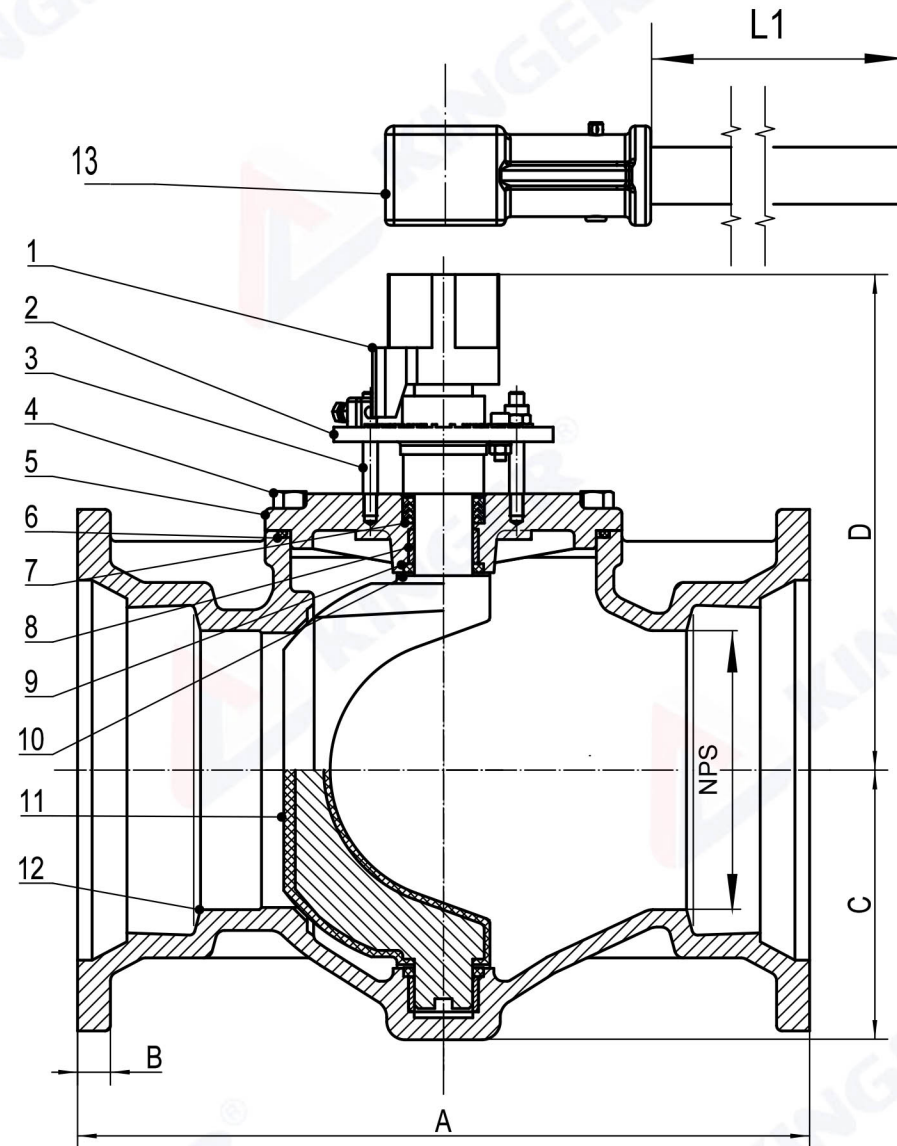


Item No.	NPS	Dimensions(Inch)									
		A	C	D	F	G	B	J	K	L	L1
MPL175-CNT03	3"	11.50	3.54	8.60	7.62	6.19	0.58	N/A	0.750	4	10.2
MPL175-CNT04	4"	14.25	4.53	9.35	9.06	7.50	0.60	N/A	0.875	4	10.2
MPL175-CNT06	6"	15.75	5.79	10.66	11.06	9.50	0.63	2	0.875	4	19.1
MPL175-CNT08	8"	17.38	7.33	12.91	13.31	11.75	0.66	2	0.875	4	19.1

Specification			
Cold Working Pressure (CWP)	175	PSI	
Test Pressure	Shell Test(Hyd.)		265
	Seal Test(Hyd.)		175
	Reverse Pressure Test(Hyd.)		100
Working Temperature	32°F -176°F		
Medium	Water		



**NOTES:**

1. ALL DIMENSIONS ARE IN INCHES ;
2. DESIGN STANDARD PER AWWA C517 ;
3. MECHANICAL JOINT STANARD PER AWWA C153/A21.53;

Part No.	Description	Material Specification
1	Nut	Ductile Iron ASTM A536 65-45-12
2	Friction Collar	ZG310-570
3	Fastener	Stainless Steel SS316
4	Bonnet Bolt	Stainless Steel SS316
5	Bonnet	Ductile Iron ASTM A536 65-45-12
6	O-Ring	NBR ASTM D2000
7	"V" Packing	NBR ASTM D2000
8	Sleeve Bearing	Stainless Steel SS316
9	Grit Seal	NBR ASTM D2000
10	Thrust Washer	PTFE
11	Plug	DI ASTM A536 65-45-12+NBR ASTM D2000
12	Body	Ductile Iron ASTM A536+95%Ni
13	Lever	Carbon Steel

DESCRIPTION	Proj.	MPL175-CNT	
<b>AWWA C517 Mechanical Joint Eccentric Plug Valve</b>	DWG#	MPL-001	REV. 1
	DWN	APPR.	DATE
	CINDY	KUHN	9/23/2021