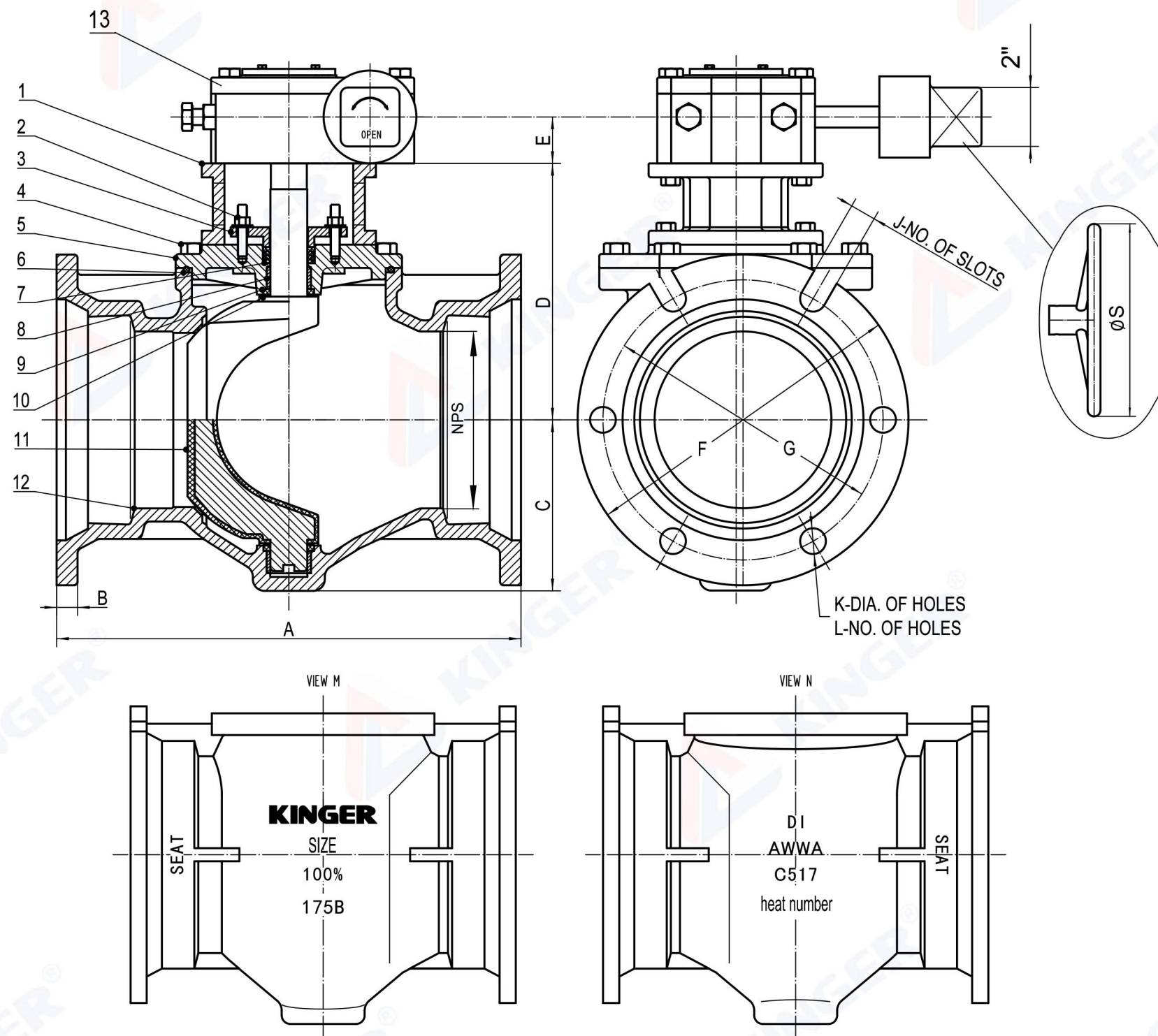
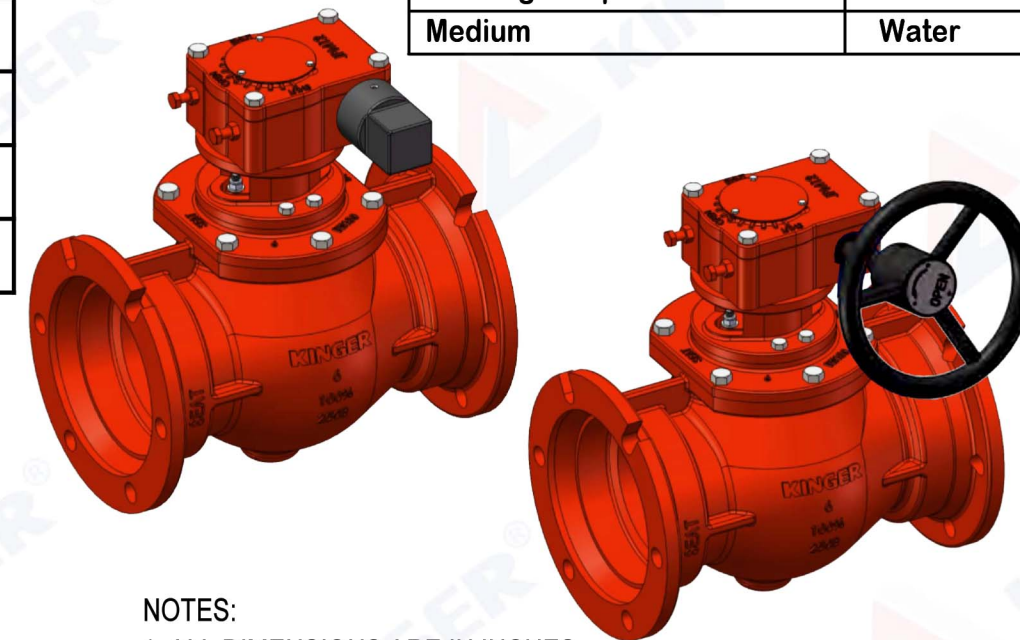


Item No.	NPS	Dimensions(Inch)										ØS
		A	C	D	E	F	G	B	J	K	L	
MPL175-GH03	3"	11.50	3.54	6.08	1.58	7.62	6.19	0.58	N/A	0.750	4	8
MPL175-GH04	4"	14.25	4.53	7.00	1.58	9.06	7.50	0.60	N/A	0.875	4	8
MPL175-GH06	6"	15.75	5.79	8.74	1.58	11.06	9.50	0.63	2	0.875	4	12
MPL175-GH08	8"	17.38	7.33	10.51	1.58	13.31	11.75	0.66	2	0.875	4	18
MPL175-GH10	10"	19.38	9.06	12.52	1.90	15.62	14.00	0.70	2	0.875	6	20
MPL175-GH12	12"	20.75	10.24	13.96	1.90	17.88	16.25	0.73	2	0.875	6	24

Specification			
Cold Working Pressure (CWP)	175	PSI	
Test Pressure	Shell Test(Hyd.)		265
	Seal Test(Hyd.)		175
	Reverse Pressure Test(Hyd.)		175
Working Temperature	32°F -176°F		
Medium	Water		



NOTES:

1. ALL DIMENSIONS ARE IN INCHES ;
2. DESIGN STANDARD PER AWWA C517 ;
3. MECHANICAL JOINT STANARD PER AWWA C153/A21.53;

Part No.	Description	Material Specification
1	Adapter	Ductile Iron ASTM A536 65-45-12
2	Gland Fastener	Stainless Steel SS316
3	Gland	Ductile Iron ASTM A536 65-45-12
4	Bolts	Stainless Steel SS316
5	Bonnet	Ductile Iron ASTM A536 65-45-12
6	O-Ring	NBR ASTM D2000
7	"V" Packing	NBR ASTM D2000
8	Sleeve Bearing	Stainless Steel SS316
9	Grit Seal	NBR ASTM D2000
10	Thrust Washer	PTFE
11	Plug	DI ASTM A536 65-45-12+NBR ASTM D2000
12	Body	Ductile Iron ASTM A536+95%Ni
13	Worm Gear	Assembly

DESCRIPTION	Proj.	MPL175-GH	
AWWA C517 Mechanical Joint Eccentric Plug Valve	DWG#	MPL-002	REV. 1
	DWN	APPR.	DATE
	CINDY	KUHN	9/23/2021

CUSTOMER	 KINGER INDUSTRY INC.
PAGE NO.	

KINGER RESERVES THE RIGHT TO CHANGE DESIGN & MATERIAL WITHOUT PRIOR NOTICE PLEASE CONNECT KINGER FOR UPDATED DATA BEFORE PLACING THE ORDER.