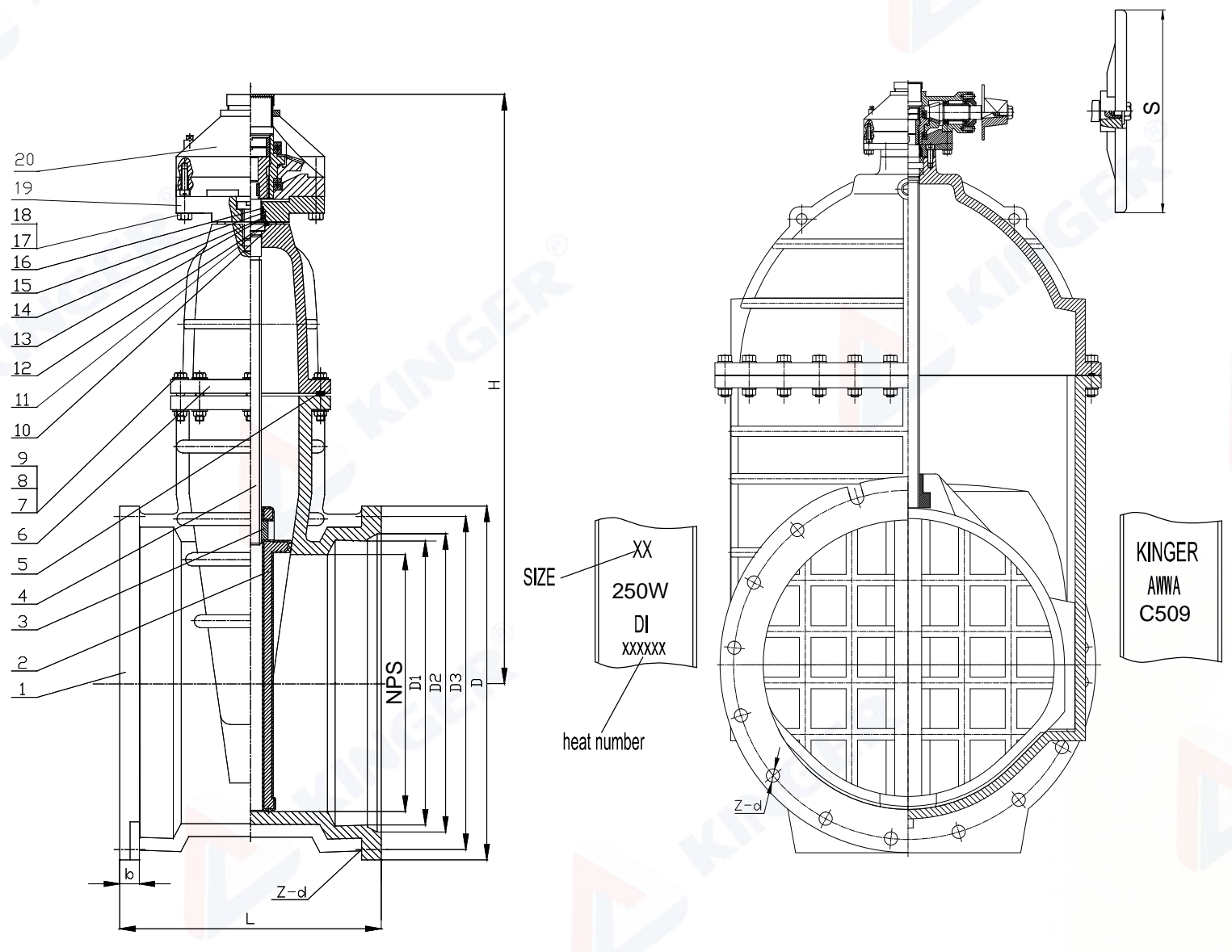


APPLICABLE STANDARD		TESTING DETAILS	
Design&Manufacture	AWWA C509	DESCRIPTION	TEST PRESSURE
End Connection	ANSI/AWWA C153/A21.53/ ANSI/AWWA C110/A21.10	SHELL TEST	500PSI
Gear Flange	ISO5211	SEAT TEST	250PSI
Working Temperature	32°F -176°F		
Medium	Water		



Part No.	Description	Material Specification
1	Body	Ductile Iron ASTM A536
2	Wedge	DI ASTM A536 +EPDM ASTM D2000
3	Stem Nut	Brass ASTM B16
4	Stem	Stainless Steel SS316
5	Gasket	EPDM ASTM D2000
6	Bonnet	Ductile Iron ASTM A536
7	Bonnet Bolt	Stainless Steel SS316
8	Nut	Stainless Steel SS316
9	Washer	Stainless Steel SS316
10	O-Ring	EPDM ASTM D2000
11	Minipad	2-24" PTFE
	Bearing	30-48" Stainless Steel SS316
12	O-Ring	EPDM ASTM D2000
13	O-Ring	EPDM ASTM D2000
14	O-Ring	EPDM ASTM D2000
15	Seal Ring	Brass ASTM B16
16	Dust Ring	EPDM ASTM D2000
17	Bolt	Stainless Steel SS316
18	Washer	Stainless Steel SS316
19	Gland	Ductile Iron ASTM A536
20	Gear Box	

Item No.	Dimensions(Inch)											TURN TO OPEN	TUM RANGE
	NPS	D	D1	D2	D3	b	z	d	S	L	H		
JHZ35XQ-G02	2"	6.25	2.61	3.50	4.75	0.75	2	0.750	10	8.25	16.65	20	±3
JHZ35XQ-G025	2.5"	6.75	3.30	4.22	5.40	0.88	2	0.750	10	8.25	17.64	26	
JHZ35XQ-G03	3"	7.69	4.06	4.94	6.19	0.94	4	0.750	10	8.50	18.66	32	
JHZ35XQ-G04	4"	9.12	4.90	6.02	7.50	1.00	4	0.875	10	9.50	19.96	39	
JHZ35XQ-G06	6"	11.12	7.00	8.12	9.50	1.06	6	0.875	10	10.00	23.62	58	
JHZ35XQ-G08	8"	13.37	9.15	10.27	11.75	1.12	6	0.875	12	10.50	27.05	77	
JHZ35XQ-G10	10"	15.69	11.20	12.34	14.00	1.19	8	0.875	12	12.00	30.43	115	±5
JHZ35XQ-G12	12"	17.94	13.30	14.44	16.25	1.25	8	0.875	12	13.00	33.90	137	
JHZ35XQ-G14	14"	20.31	15.44	16.54	18.75	1.31	10	0.875	16	14.00	36.73	213	
JHZ35XQ-G16	16"	22.56	17.54	18.64	21.00	1.38	12	0.875	16	18.00	39.76	180	
JHZ35XQ-G18	18"	24.83	19.64	20.74	23.25	1.44	12	0.875	16	19.29	42.87	257	
JHZ35XQ-G20	20"	27.08	21.74	22.84	25.50	1.50	14	0.875	16	20.00	45.98	288	
JHZ35XQ-G24	24"	31.58	25.94	27.04	30.00	1.62	16	0.875	16	22.00	52.28	342	±7
JHZ35XQ-G30	30"	39.12	32.17	33.46	36.88	1.81	20	1.125	16	24.02	73.74	253	
JHZ35XQ-G36	36"	46.00	38.47	39.76	43.75	2.00	24	1.125	16	27.99	76.46	266	
JHZ35XQ-G42	42"	53.12	44.67	45.96	50.62	2.00	28	1.375	16	35.98	93.39	381	
JHZ35XQ-G48	48"	60.00	50.97	52.26	57.50	2.00	32	1.375	16	43.00	108.94	426	

DESCRIPTION	Proj.	JHZ35XQ-G001
AWWA C509 Mechanical Resilient NRS Gate Valve & Bevel Gears	DWG#	REV.
	JH-007	0
	WN	APPR.
	CINDY	DATE
	KUHN HU	3-7-2025